



CTC Source Protection Region



Source Water Protection Planning In Orangeville, Amaranth and Mono

Consultation on the *Draft Proposed Assessment Report: Credit Valley Source Protection Area*

October 20, 2010

Susan Self, Chair, CTC Source Protection Committee



Source Water Protection?

- **Source water** is the water used to supply public drinking water systems.
- **Source water protection** is simply protecting water sources from contamination or overuse.



Source Water Protection is the best, and most cost-effective way to protect our drinking water for now and forever

Why Source Protection?

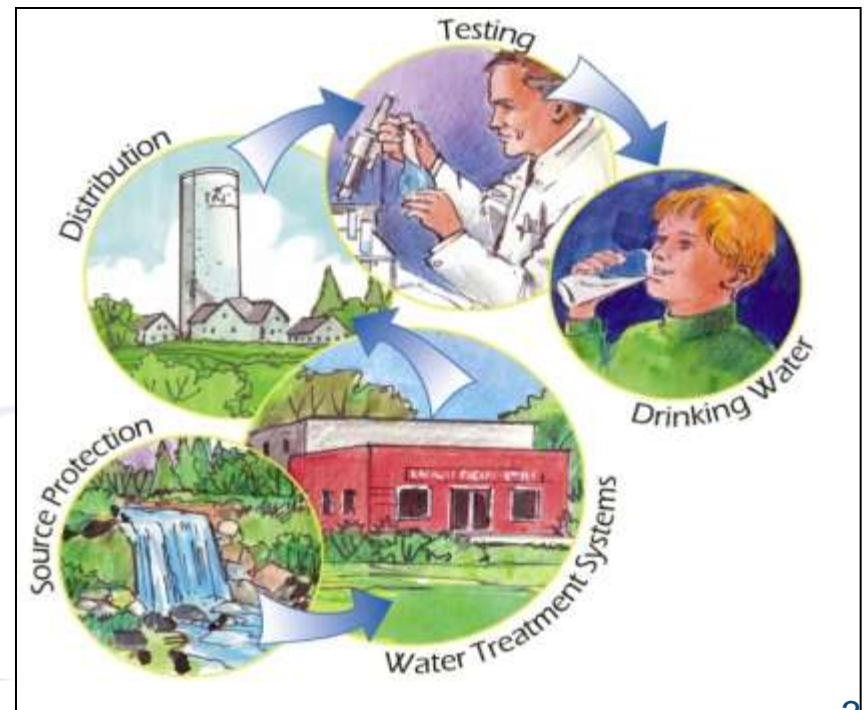


Walkerton:

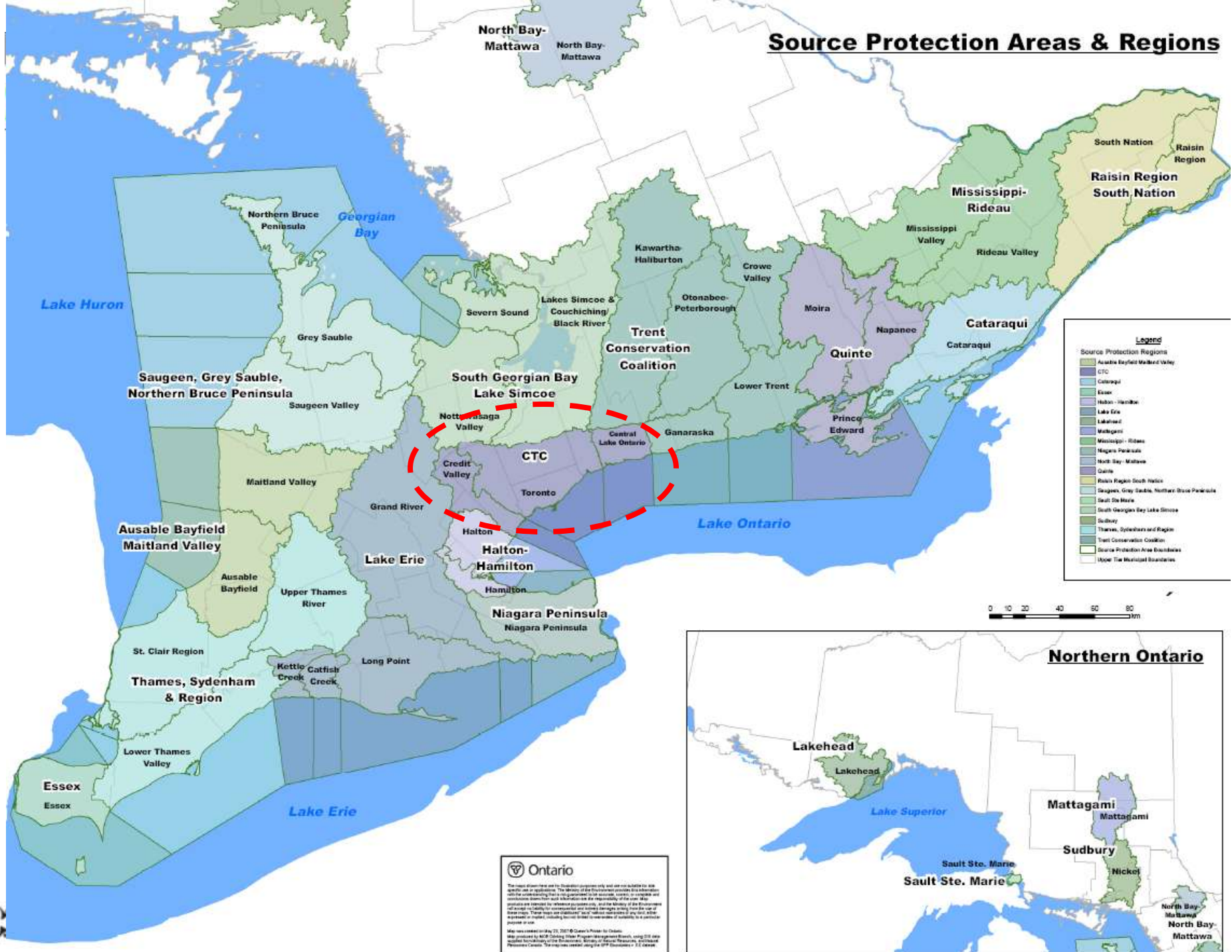
- 7 people died, half the town became sick and people are still being affected

The Walkerton Inquiry:

- Multi barrier approach to protecting municipal drinking water throughout Ontario.
- Each barrier deals with one or more of the flaws that came to light in Walkerton.



Source Protection Areas & Regions

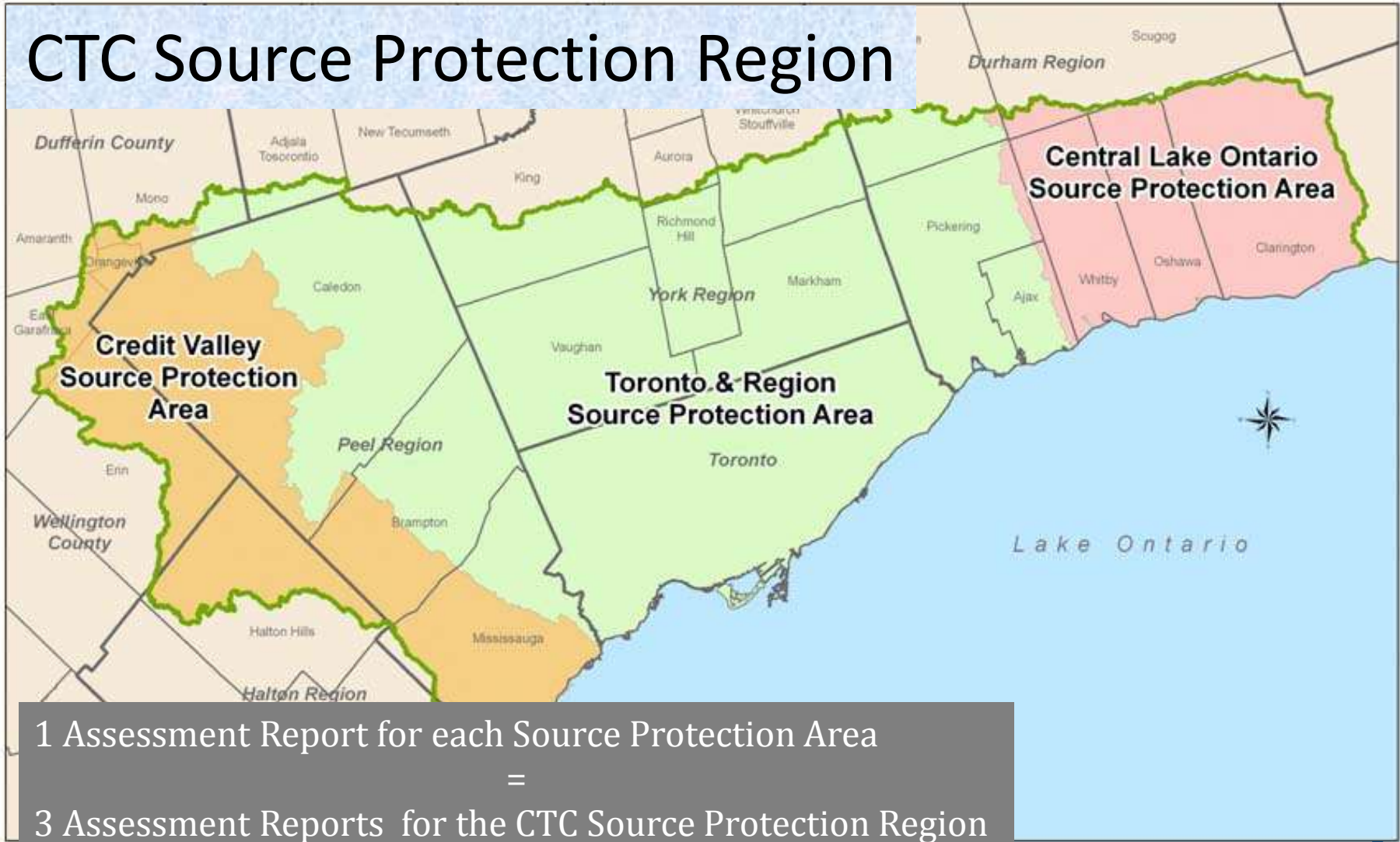


Ontario

The map information and the Source Protection Regions only and are not suitable for use as a specific site or application. The Ministry of the Environment, Conservation and Forestry is not responsible for any damage or loss resulting from the use of this information. The Ministry of the Environment, Conservation and Forestry is not responsible for any damage or loss resulting from the use of this information. The Ministry of the Environment, Conservation and Forestry is not responsible for any damage or loss resulting from the use of this information.

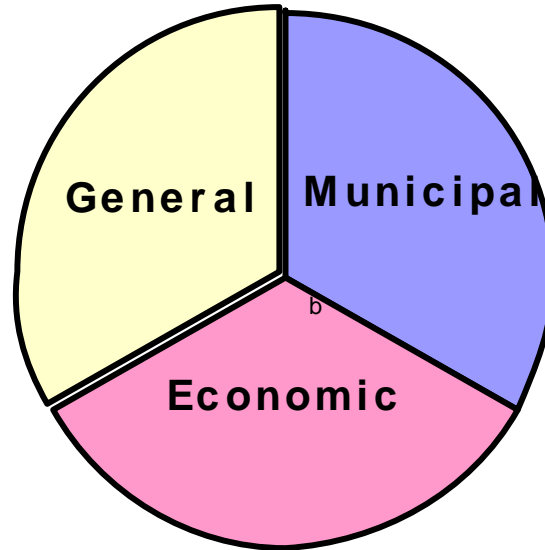
Map data compiled by 25, 2017 © Crown's Printer for Ontario. Map produced by MCF Strategic Urban Program Development Branch, using GIS data supplied by the Ministry of the Environment, Conservation and Forestry, and the Province of Ontario. The map is not intended to be used for navigation purposes. The map is not intended to be used for navigation purposes. The map is not intended to be used for navigation purposes.

CTC Source Protection Region



1 Assessment Report for each Source Protection Area
=
3 Assessment Reports for the CTC Source Protection Region

Who is the CTC Source Protection Committee?



Chair – Susan Self

Liaison Members:

Brian Denney (CA)

Norine Schofield (MOH)

John Westlake (MOE)

**Juli Abouchar
Michael Garrett
Jessica Ginsburg
Robert Goodings
Irv Harrell
Peter Orphanos
Fred Ruf**

**Andrea Bourrie
Doug Brown
Wendy Burgess
Louise Foster
Heather Laidlaw
Peter Miasek
Lynne Moore**

**Bob Burnside
Michael D’Andrea
David Kentner
Laura McDowell
John Presta
Mark Schiller
Howard Shapiro**

CTC Source Protection Region Timelines

<u>Terms of Reference</u>	<u>Assessment Reports</u>	<u>Source Protection Plans</u>
<ul style="list-style-type: none"> • Road map for Source Protection Planning 	<ul style="list-style-type: none"> • Scientific basis behind Source Protection Planning • Public consultation period • Due December 2010; updated report due June 2011 	<ul style="list-style-type: none"> • Policy development <ul style="list-style-type: none"> ✓ Reduce & prevent threats ✓ Future & existing development • Consult with <ul style="list-style-type: none"> ✓ Municipalities ✓ Potentially affected property owners
<p>2008</p>	<p>2010</p>	<p>2012</p>

Assessment Report Components:

Introduction

Chapter 1

Watershed Characterization

Chapter 2

Water Budgets and Water Quantity Threats Assessment

Chapter 3

Groundwater Vulnerability and

Surface Water Vulnerability

Chapter 4

Threats and Issues - Water Quality Threats Assessment

Chapter 5

Conclusion

Chapter 6



CTC Source Protection Region

Credit Valley Source Protection Area
Toronto and Region Source Protection Area
Credit Lake Ontario Source Protection Area

**Draft Proposed Assessment Report:
Credit Valley Source Protection Area**

Volume 1 of 2: Report

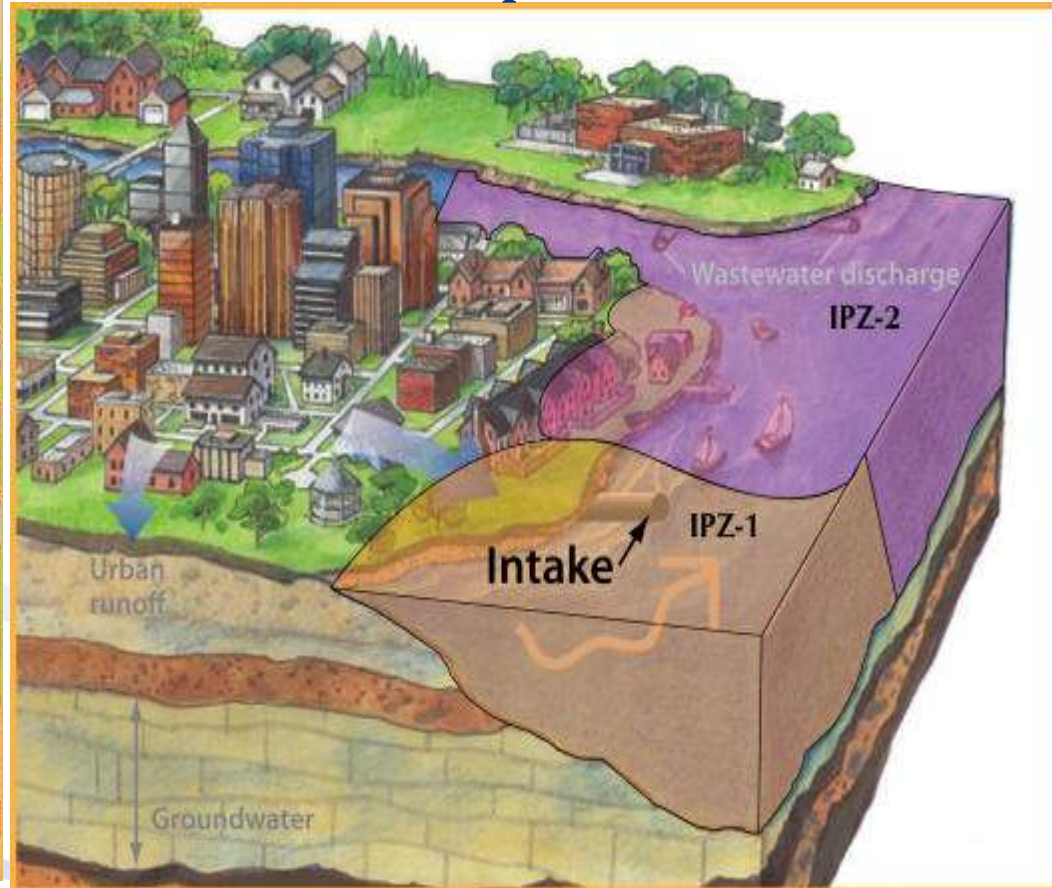
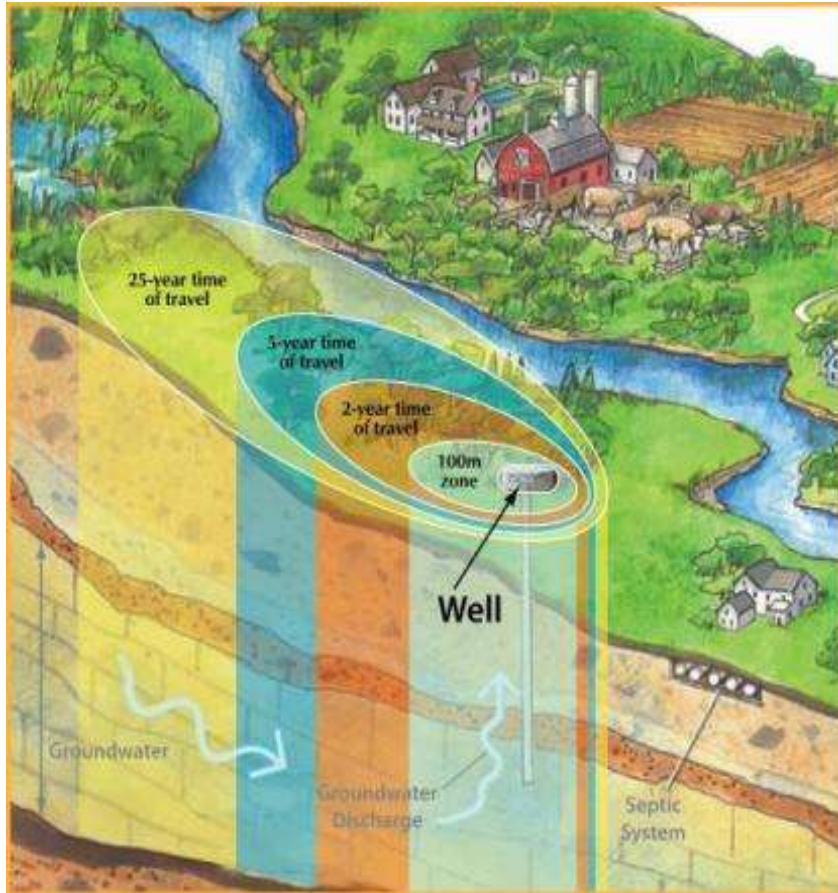


Prepared by:
Credit Valley Conservation Authority
Sept. 29, 2010

The Four Vulnerable Areas:

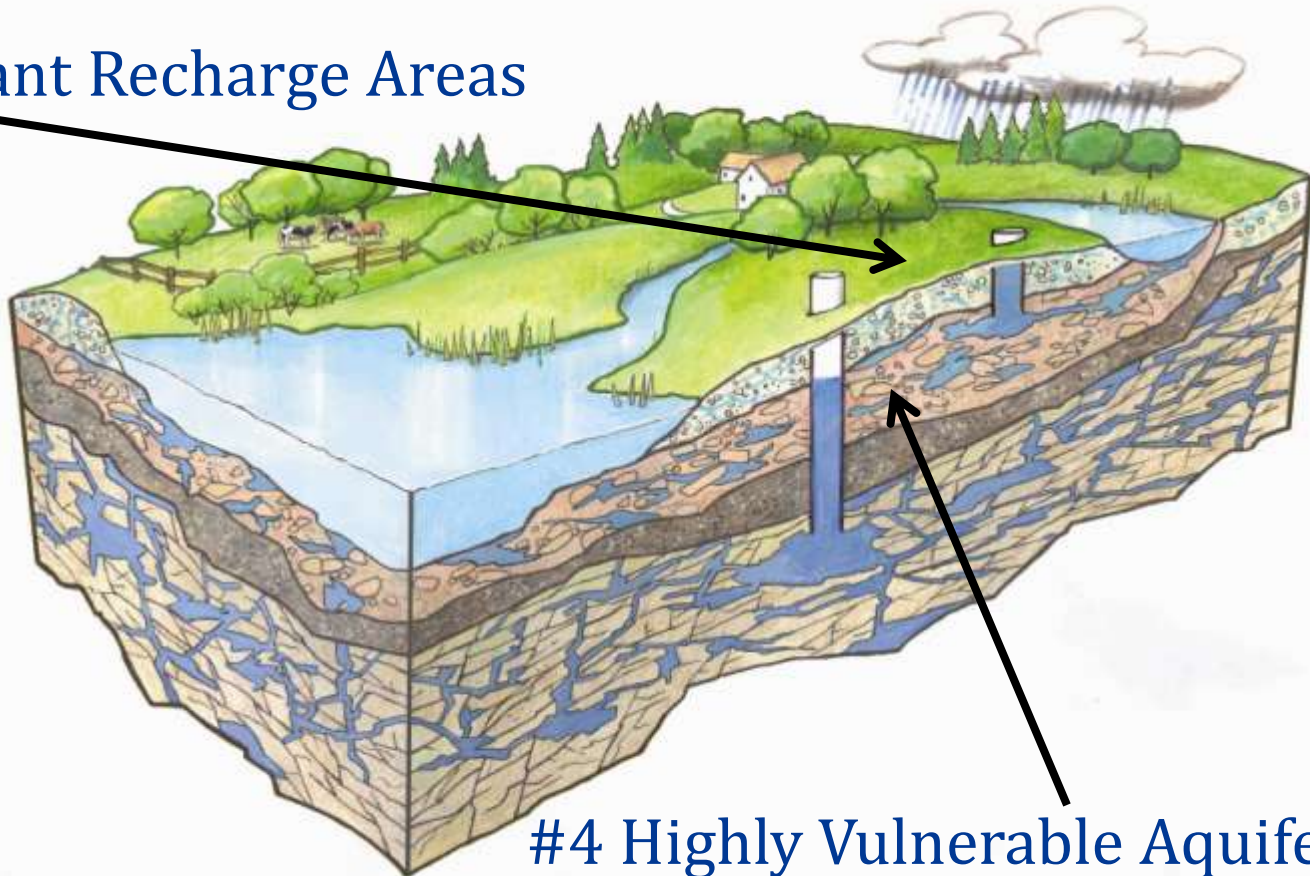
#1 Wellhead Protection Area

#2 Intake protection zone



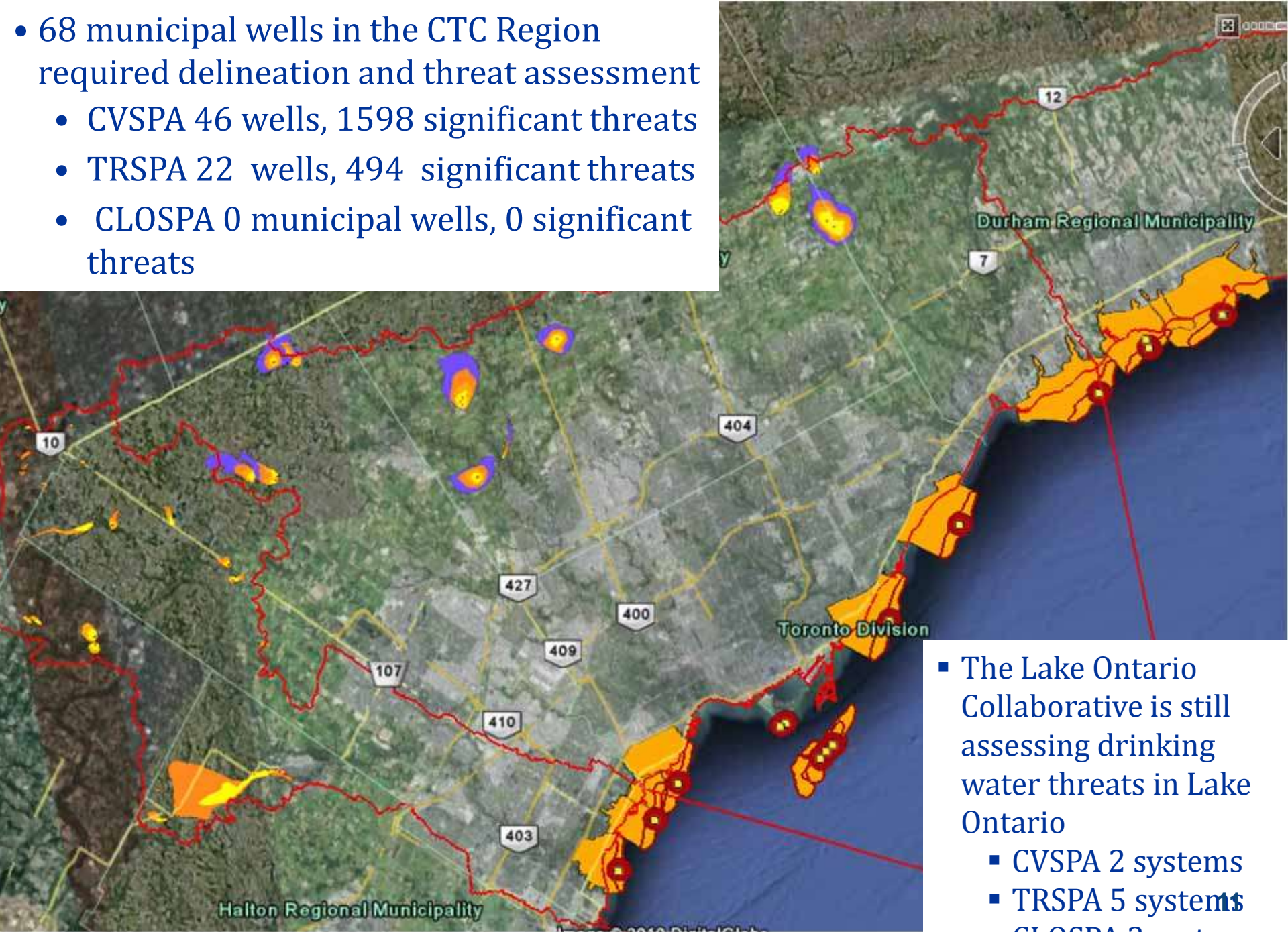
The Four Vulnerable Areas:

#3 Significant Recharge Areas



#4 Highly Vulnerable Aquifers

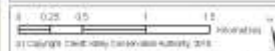
- 68 municipal wells in the CTC Region
 - CVSPA 46 wells, 1598 significant threats
 - TRSPA 22 wells, 494 significant threats
 - CLOSPA 0 municipal wells, 0 significant threats



- The Lake Ontario Collaborative is still assessing drinking water threats in Lake Ontario
 - CVSPA 2 systems
 - TRSPA 5 systems
 - CLOSPA 3 systems

Activity (or Threat Type)	Orangeville	Amaranth	Mono
1. The establishment, operation, or maintenance of a waste disposal site within the meaning of Part V of the <i>Environmental Protection Act (EPA)</i>	1	0	0
2. The establishment, operation, or maintenance of a system that collects, stores, transmits, treats, or disposes of sewage	188	2	4
3. The application of agricultural source material to land	2	0	1
4. The storage of agricultural source material	1	0	0
5. The management of agricultural source material	0	2	0
6. The application of non-agricultural source material (NASM) to land	2	2	1
7. The handling and storage of non-agricultural source material NASM	0	0	0
8. The application of commercial fertilizer to land	0	0	0
9. The handling and storage of commercial fertilizer	1	1	0
10. The application of pesticide to land	2	2	1
11. The handling and storage of pesticide	1	1	0
12. The application of road salt	0	0	0
13. The handling and storage of road salt	3	0	0
14. The storage of snow	1	0	0
15. The handling and storage of fuel	3	0	3
16. The handling and storage of a dense non-aqueous phase liquid	36	0	14
17. The handling and storage of an organic solvent	0	0	1
18. The management of runoff that contains chemicals used in the de-icing of aircraft	0	0	0
19. An activity that takes water from an aquifer or a surface water body without returning the water taken to the same aquifer or surface water body	Tier 3 Water Budget Work Ongoing		
20. An activity that reduces the recharge of an aquifer	Tier 3 Water Budget Work Ongoing		
21. The use of land as livestock grazing or pasturing land, an outdoor confinement area, or a farm-animal yard	1	0	0
Total Threats	242	10	25
Total Parcels	206	2	11

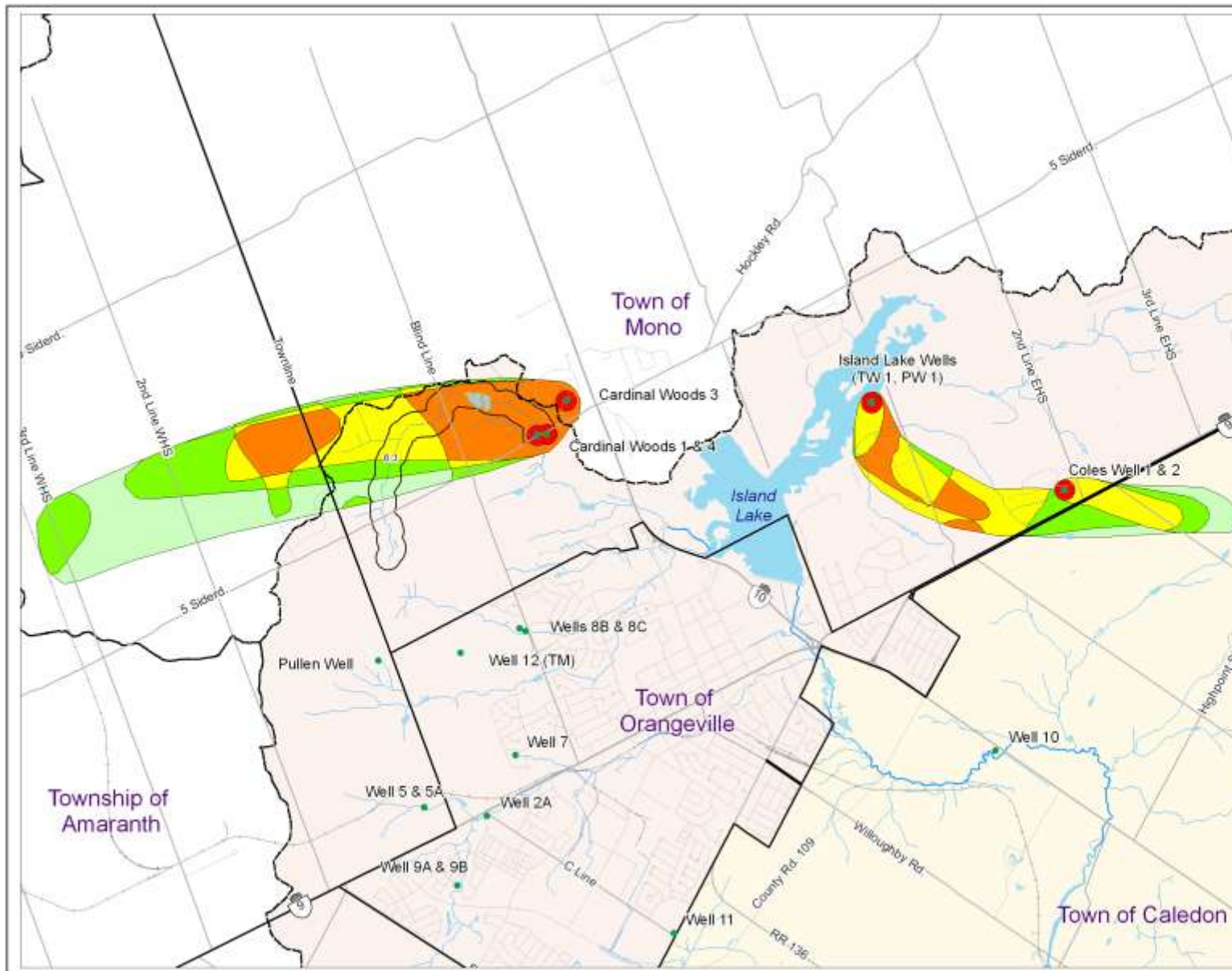
Vulnerability for WHPAs
Mono



© Copyright Credit Valley Conservation Authority 2018
 Map by CVC. All rights reserved. Credit Valley Conservation Authority, 2018.
 CVC, 2018. All rights reserved. Credit Valley Conservation Authority, 2018.
 Credit Valley Conservation Authority, 2018. All rights reserved. Credit Valley Conservation Authority, 2018.

This document is for informational purposes only and is not the Credit Valley Conservation Authority's responsibility for, nor guarantee, the accuracy of all the information contained within the map.

This map was prepared to meet provincial requirements under the Clean Water Act, 2006 and should not be used for other purposes without consultation with the responsible jurisdiction. The map is used to indicate the relative vulnerability of the watershed. It does not indicate the specific vulnerability of a watershed with respect to any particular source, being used for other purposes.



Scope of Work

1. Communications Plan
2. Data Management Plan
3. Phase 1 & 2 Work (Some results incorporated into this Assessment Report)
 1. Pathogen Monitoring Plan – Lake Ontario Winter Sampling
 2. IPZ 1&2 delineation and threats assessment
 3. Watershed Pollutant Loading
4. Phase 3 Work (further results to be incorporated into Update Assessment Report)
 1. Municipal Data Compilation and Inventory and Issues Evaluation
 2. IPZ-3 Delineation, Spill Simulations and Threats Assessments
 3. Ongoing pollutant loading studies



Updated Assessment Reports

- Due June of 2011 and will include:
 - Lake Ontario findings,
 - Tier 3 water budget and
 - Reassessment of vulnerability scores in areas of WHPAs due to presence of transport pathways (i.e. other wells)
- Public consultation will be undertaken in areas affected by the updates
- Updated information will be used in the source protection plan



TRSPA Tier 3
Water Budget Area

Source Protection Plans

- All “significant” threats *must* be addressed through Source Protection Plans and significant threat policies must be complied with
- Plans will dictate the methods by which the different significant threats can be made less harmful including:

1. *prescribed instruments (other provincial approvals such as certificates of approval);*
2. *requiring risk management plans (negotiated with individual businesses);*
3. *restricted land use;*
4. *prohibition of activities;*
5. *education and outreach; or*
6. *combination of the above tools*



For more information:

Please talk with one of our staff:

- Find out more about Source Protection
- What specific activities might be drinking water threats

Stay in touch:

- Write or send an email with your comments or questions
- Sign up on our mailing list to receive information about updated Assessment Report findings and development of the Source Protection Plan

Contact us:

www.ctcswp.ca

sourcewater@trca.on.ca

Chair, CTC SPC 5 Shoreham Dr.
Downsview ON M3N 1S4

Thank You for Coming